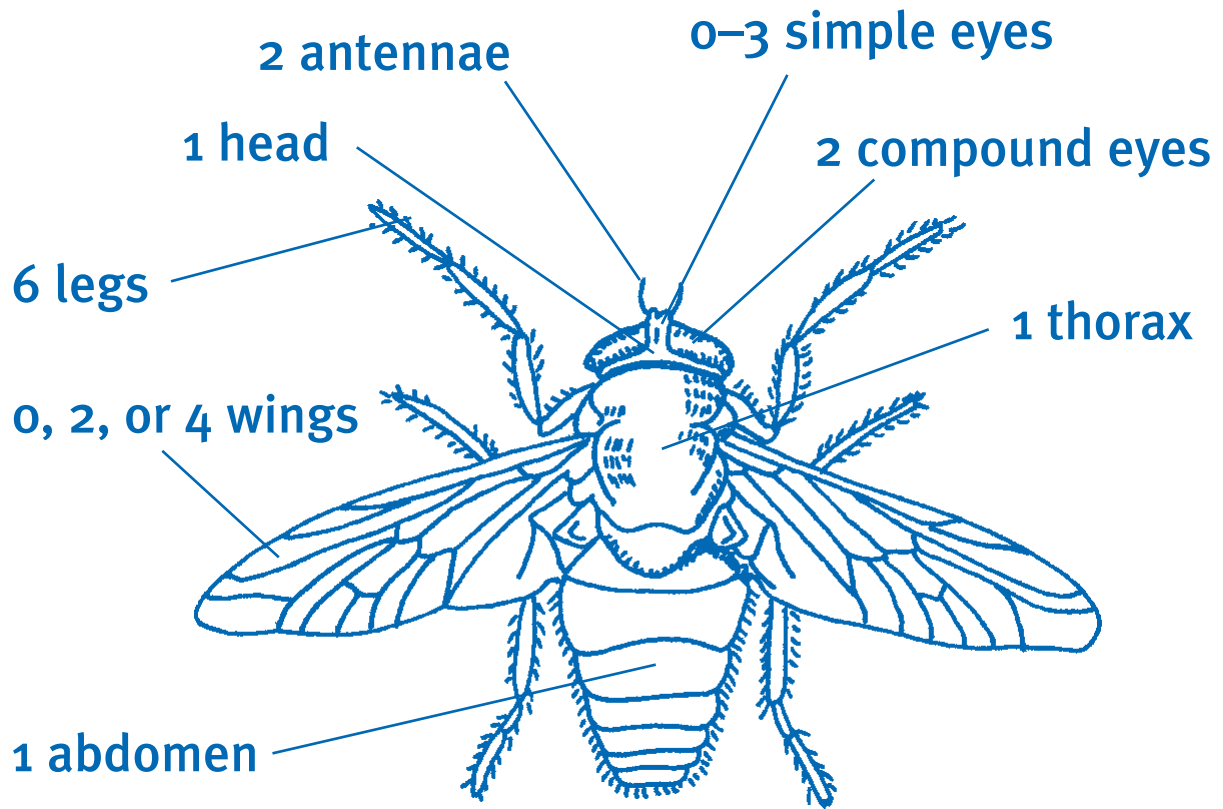


Build a Bug

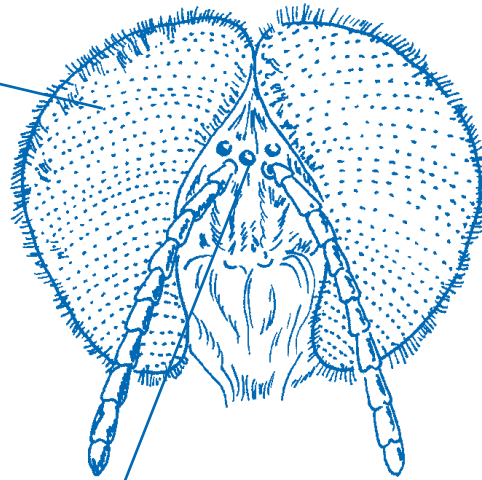


Build your own insect. Draw it here.

Insect Vision

Real insect eye

compound eye



simple eye

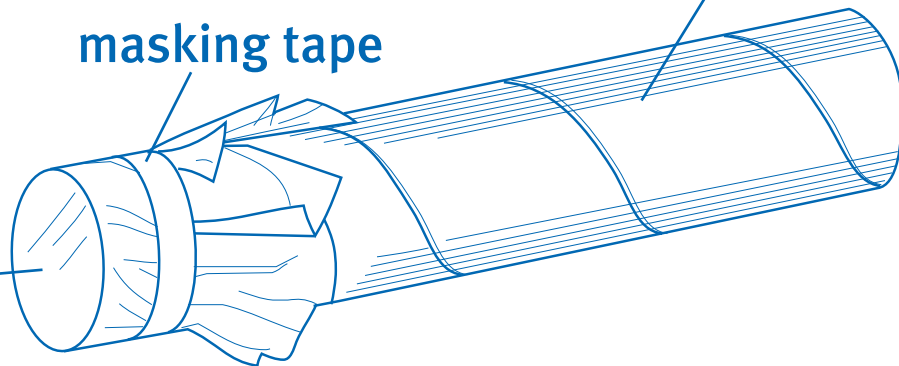
Make these insect eye models.

Simple eye model

long tube

masking tape

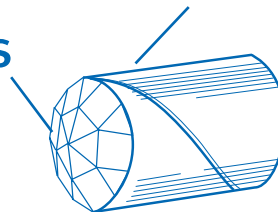
tissue paper



Compound eye model

short tube

lens



Insect Vision

1. Look through each tube. Write *yes* or *no* to tell what you can see.

Can you . . .	Simple Eye (tissue paper)	Compound Eye (lens)
Find lights or windows?		
Find a dark area?		
Read the clock?		
Read a book?		

2. Now use only the compound eye model. Write *yes* or *no* to tell what you can see.

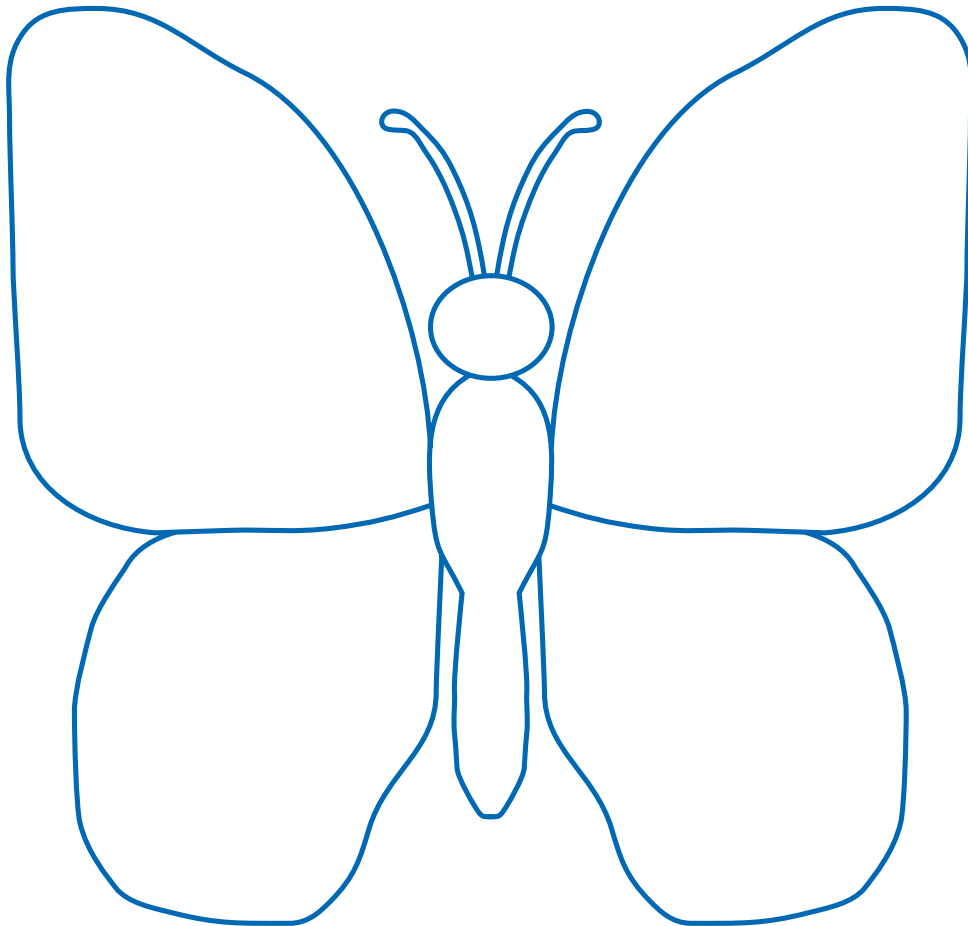
Can you . . .	From across the room	From one meter away
Tell who a student is?		
Tell when a student waves his or her arms?		
Read a book?		

Insects in Hiding

1. How many butterflies did the class hide? _____

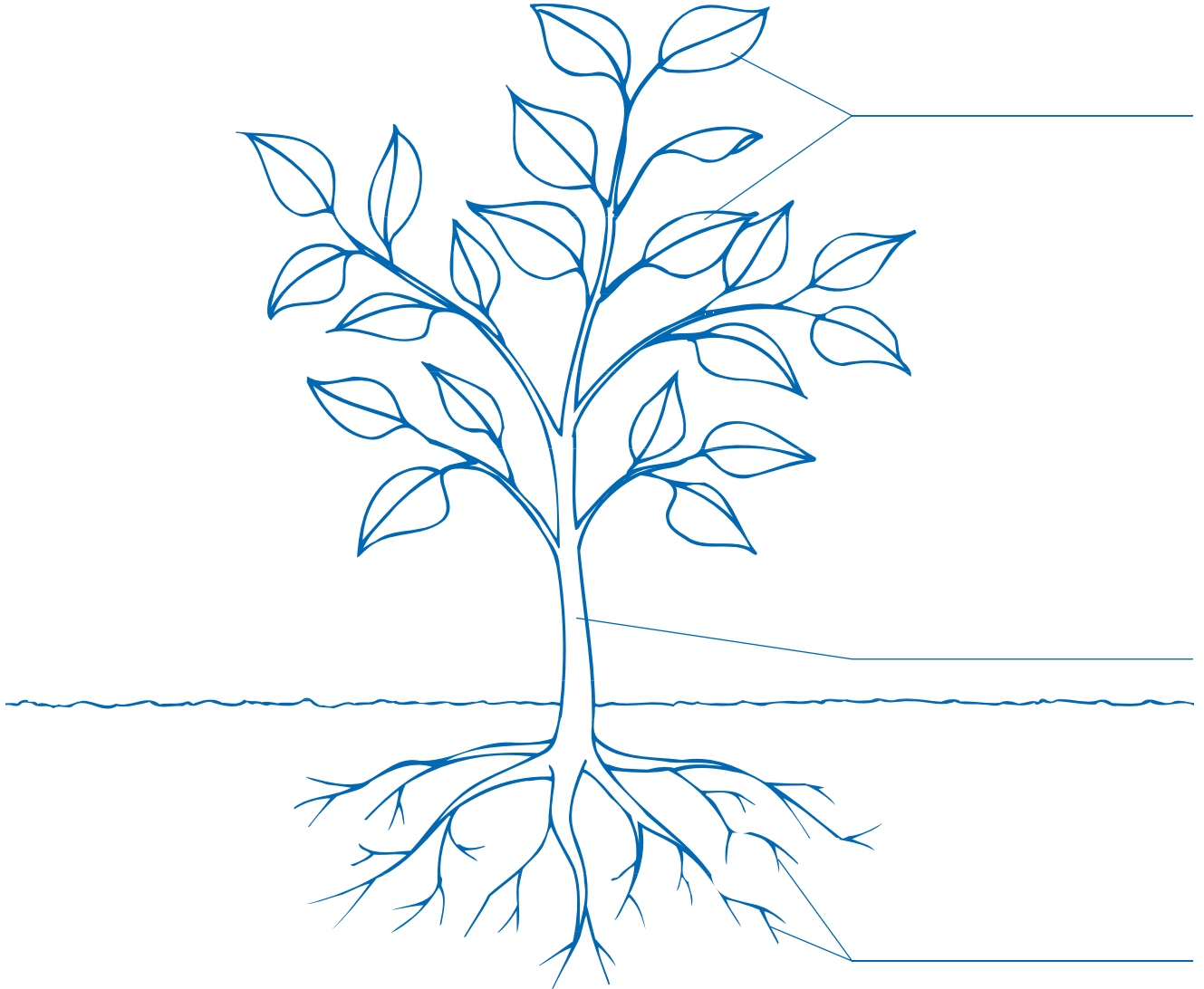
2. How many butterflies could you find? **—** _____

3. How many butterflies did you miss? _____



Observing Plants and Animals

1. Label the parts of the plant. Color the drawing.



2. Name two things that people get from plants.

Roots Anchor and Absorb

1. Draw your team's plant. Label the roots.



2. Write one of these words to finish each sentence.

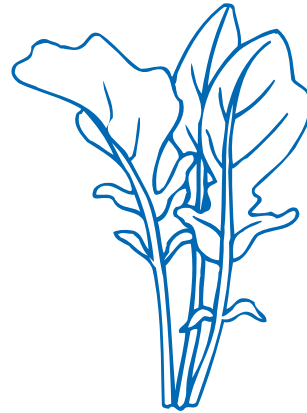
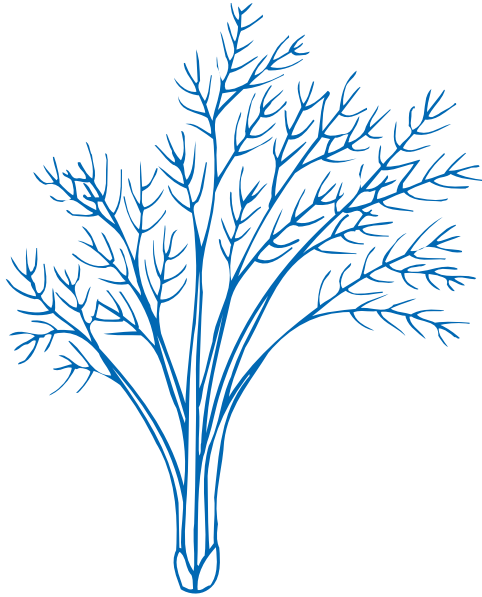
absorb	anchor
--------	--------

Roots _____ a plant in the soil.

Roots _____ water from the soil.

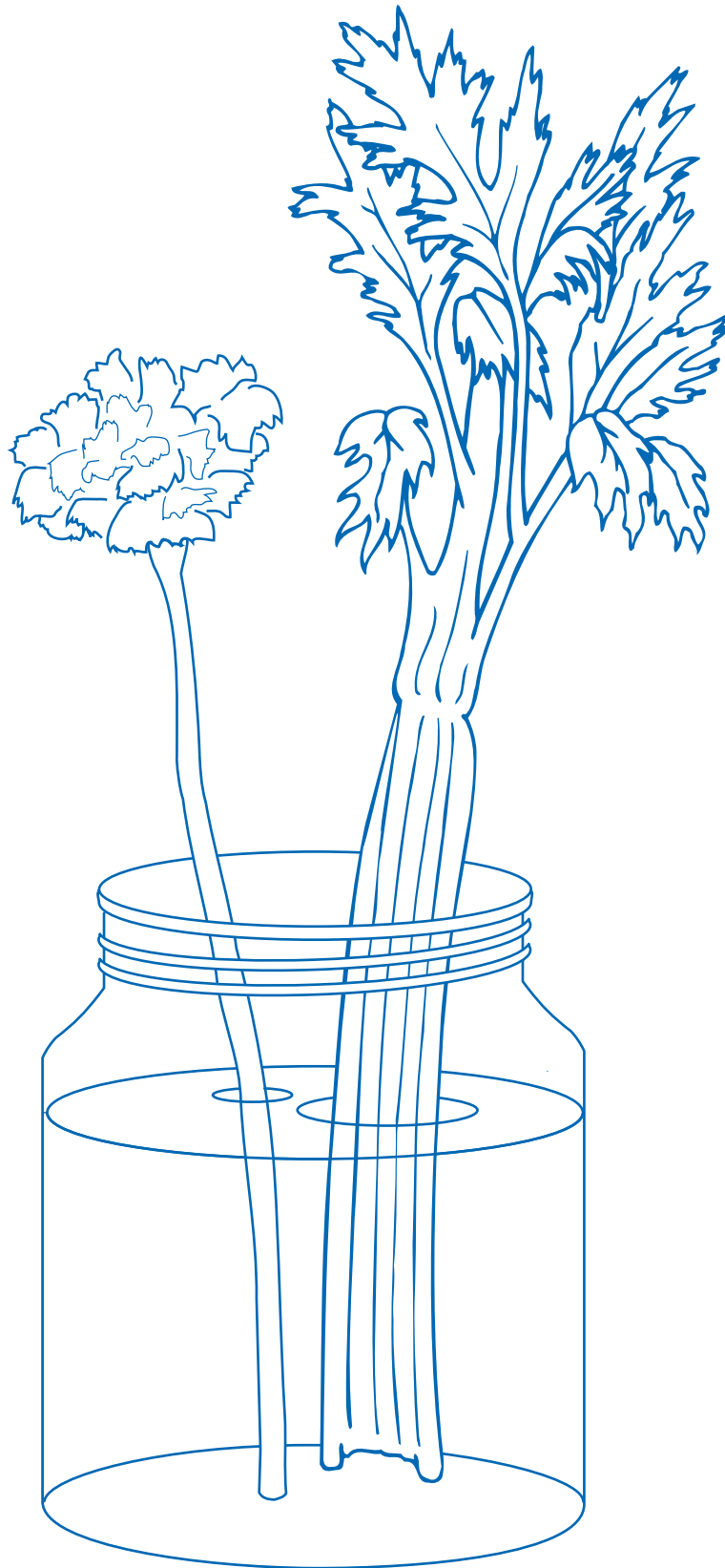
Roots Anchor and Absorb

3. Add roots to the carrot and radish plants. Draw a line to show the top of the soil. Then color your picture.



4. What do these plants store in their roots?

What Is a Stem For?



Looking at Leaves

a leaf



a leaf from the game



What Do Plants Need?

1. Title

2. Question

3. What do you think the answer to your question will be?

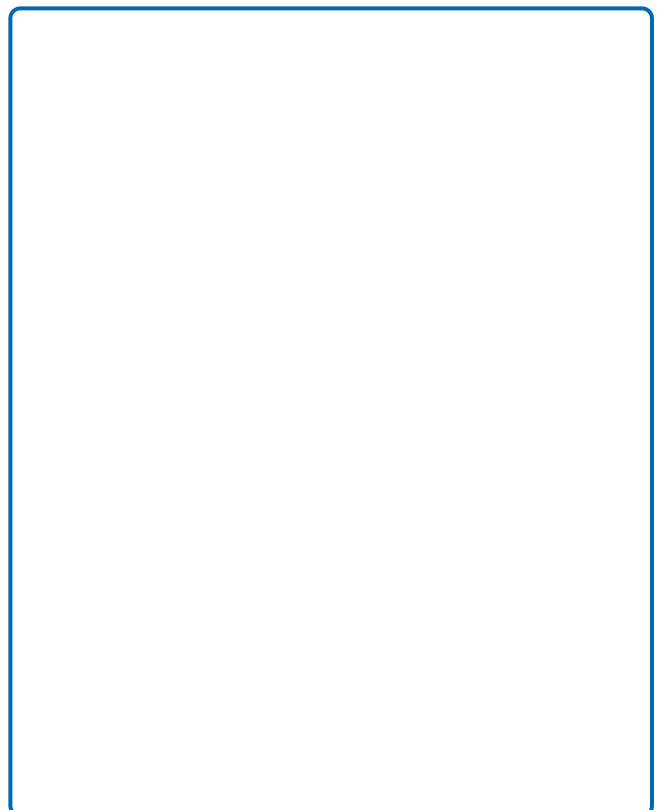
4. How can you make the two plants different?

5. How can you keep the two plants the same?

What Do Plants Need?

6. Observations

Draw pictures of your two plants. Use your crayons to match the colors of the real plants. Label the plants *Light* and *Dark*.



7. Conclusion

What is one growing condition that plants need to stay healthy?
