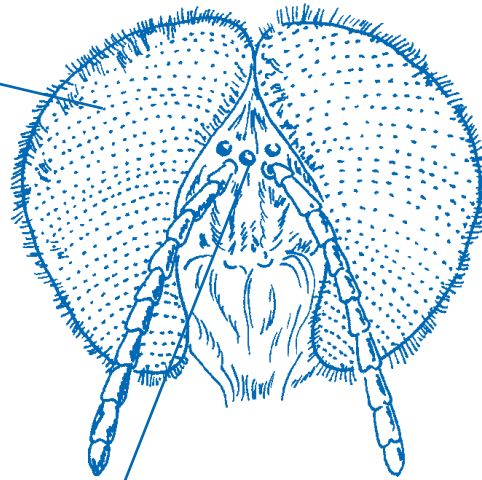


Insect Vision

Real insect eye

compound eye



simple eye

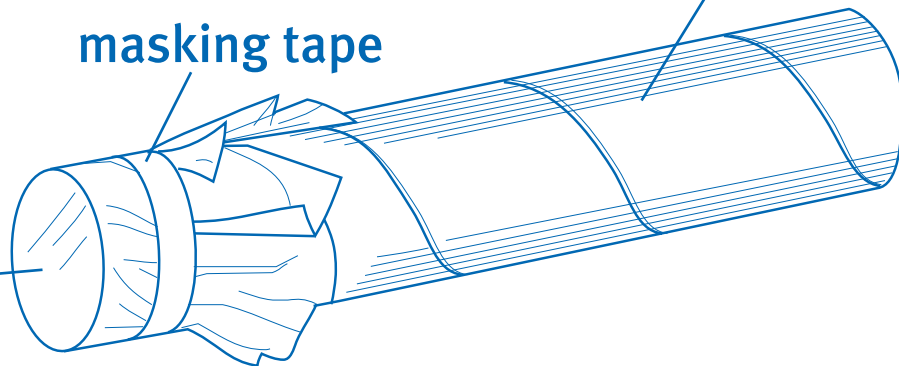
Make these insect eye models.

Simple eye model

long tube

masking tape

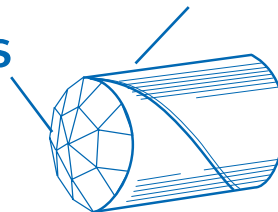
tissue paper



Compound eye model

short tube

lens



Insect Vision

1. Look through each tube. Write *yes* or *no* to tell what you can see.

Can you . . .	Simple Eye (tissue paper)	Compound Eye (lens)
Find lights or windows?		
Find a dark area?		
Read the clock?		
Read a book?		

2. Now use only the compound eye model. Write *yes* or *no* to tell what you can see.

Can you . . .	From across the room	From one meter away
Tell who a student is?		
Tell when a student waves his or her arms?		
Read a book?		