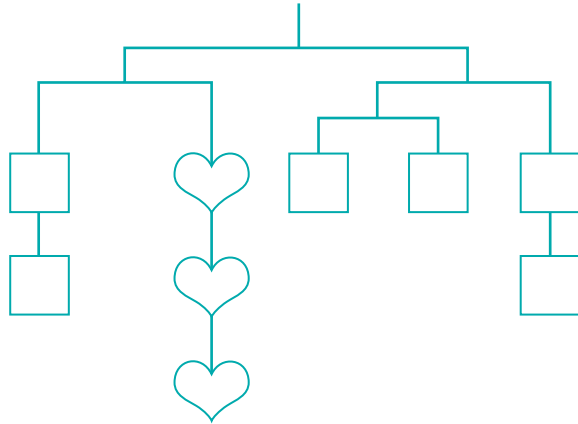


Balancing Mobiles

NCTM Standards 1, 2, 7, 8, 9

Solve these mobile puzzles.

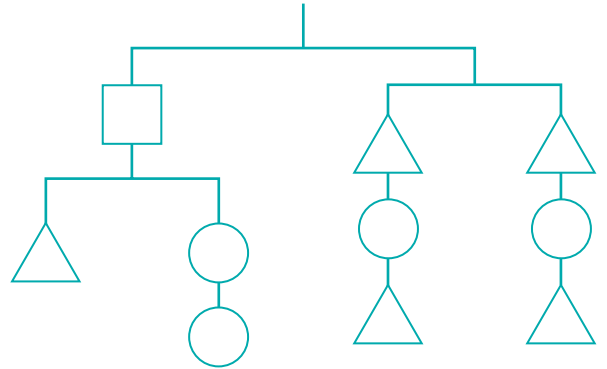
1 Total Weight: 48



$\square = \underline{\hspace{2cm}}$

$\heartsuit = \underline{\hspace{2cm}}$

2 Total Weight: 60



$\square = 18$

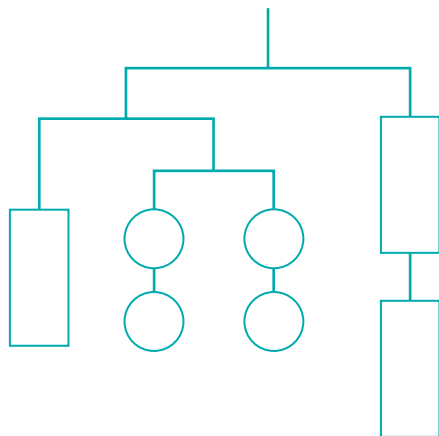
$\circ = \underline{\hspace{2cm}}$

$\triangle = \underline{\hspace{2cm}}$



3 Solve this mobile puzzle and explain how you solved it.

Total Weight: 16



$\text{rectangle} = \underline{\hspace{2cm}}$

$\circ = \underline{\hspace{2cm}}$

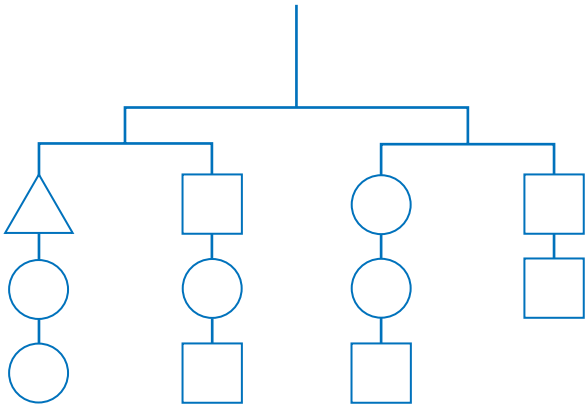
Explanation:

4 Martina made a balanced mobile with a total weight of 40.

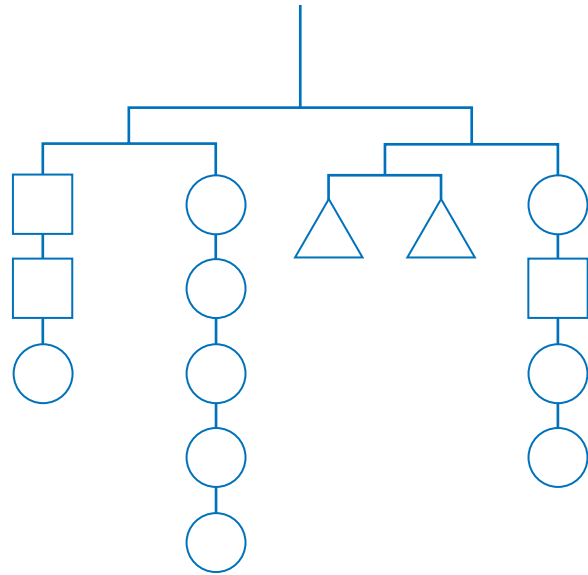
Each $\square = 4$, each $\bigcirc = 2$, and each $\triangle = 5$.

Write the letter of the correct diagram of Martina's mobile. _____

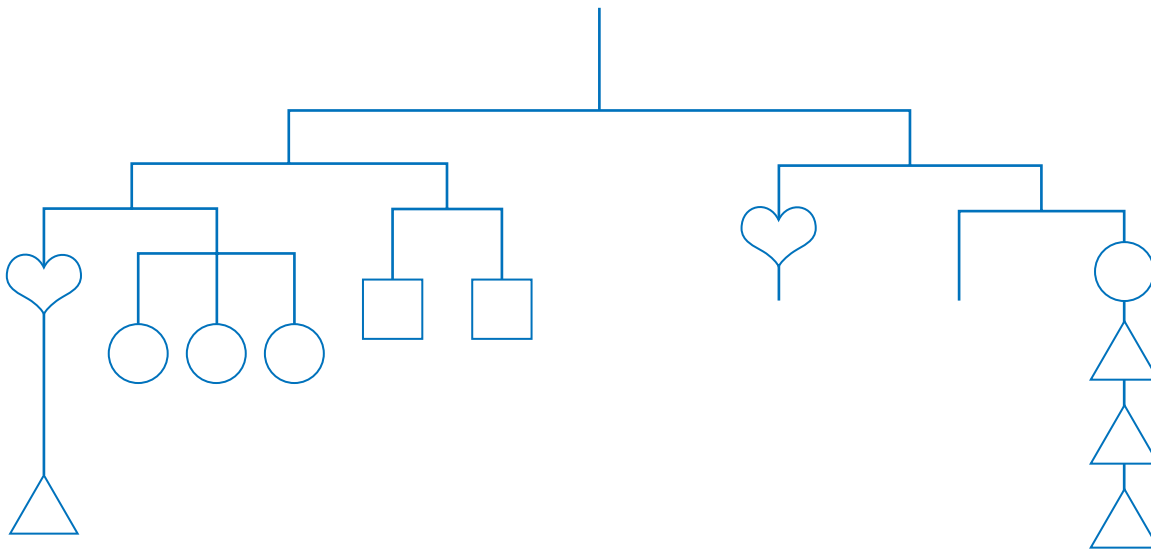
Mobile A



Mobile B



5 **Challenge** Complete this mobile so that it balances and its total weight is 72.



$\square =$ _____

$\bigcirc =$ _____

$\heartsuit =$ _____

$\triangle =$ _____